



**Beaufort County Public Works**  
**Stormwater Infrastructure**  
*Project Summary*

**Project Summary:** Smith Road

**Activity:** Routine/Preventive Maintenance

**Duration:** 03/07/19-03/20/19

**Narrative Description of Project:**

Project improved 2,040 L.F. of drainage system. Cleaned out 1,735 L.F. of channel and 305 L.F. of roadside ditch. Jetted (5) driveway pipes and (2) crossline pipes.

| <b>2019-555 / Smith Road</b>      | <b>Labor<br/>Hours</b> | <b>Labor<br/>Cost</b> | <b>Equipment<br/>Cost</b> | <b>Material<br/>Cost</b> | <b>Contractor<br/>Cost</b> | <b>Indirect<br/>Labor</b> | <b>Total<br/>Cost</b> |
|-----------------------------------|------------------------|-----------------------|---------------------------|--------------------------|----------------------------|---------------------------|-----------------------|
| AUDIT / Audit Project             | 1.0                    | \$21.79               | \$0.00                    | \$0.00                   | \$0.00                     | \$0.00                    | \$21.79               |
| CCO / Channel - cleaned out       | 15.0                   | \$338.35              | \$105.09                  | \$19.57                  | \$0.00                     | \$138.25                  | \$601.26              |
| DPJT / Driveway Pipe - Jetted     | 10.0                   | \$222.80              | \$191.60                  | \$36.64                  | \$0.00                     | \$143.40                  | \$594.44              |
| HAUL / Hauling                    | 27.0                   | \$604.89              | \$382.32                  | \$109.51                 | \$0.00                     | \$317.24                  | \$1,413.96            |
| RSDCL / Roadside Ditch - Cleanout | 60.0                   | \$1,337.70            | \$448.99                  | \$90.57                  | \$0.00                     | \$420.70                  | \$2,297.96            |
| UTLOC / Utility locates           | 0.5                    | \$10.90               | \$0.00                    | \$0.00                   | \$0.00                     | \$0.00                    | \$10.90               |
| 2019-555 / Smith Road Sub Total   | 113.5                  | \$2,536.43            | \$1,128.00                | \$256.29                 | \$0.00                     | \$1,019.59                | \$4,940.30            |
| <b>Grand Total</b>                | <b>113.5</b>           | <b>\$2,536.43</b>     | <b>\$1,128.00</b>         | <b>\$256.29</b>          | <b>\$0.00</b>              | <b>\$1,019.59</b>         | <b>\$4,940.30</b>     |

**(No Pictures Available)**





Project: Smith  
Road Map #1

Activity: Routine/  
Preventive  
Maintenance

Project #:  
2019-555

Township/SW Dist:  
Port Royal Island/6

Completed:  
March 2019

### Legend

#### Drainage Type

- Access Pipe
- Bleeder Pipe
- Channel Pipe
- Channel
- Stream
- Crossline Pipe
- Driveway Pipe
- Lateral
- Lateral Pipe
- River
- Road Pipe
- Roadside
- Roadside Pipe

0 20 40 80 120 160  
Feet

1 inch = 83 feet

Prepared By: BC Stormwater Management Utility

Date Print: 04/30/19

File: C:\project summaries map\Smith Road Map #1\_2019-555





Project: Smith  
Road Map #2

Activity: Routine/  
Preventive  
Maintenance

Project #:  
2019-555

Township/SW Dist:  
Port Royal Island/6

Completed:  
March 2019

### Legend

#### Drainage Type

- Access Pipe
- Bleeder Pipe
- Channel Pipe
- Channel
- Stream
- Crossline Pipe
- Driveway Pipe
- Lateral
- Lateral Pipe
- River
- Road Pipe
- Roadside
- Roadside Pipe

0 20 40 80 120 160  
Feet

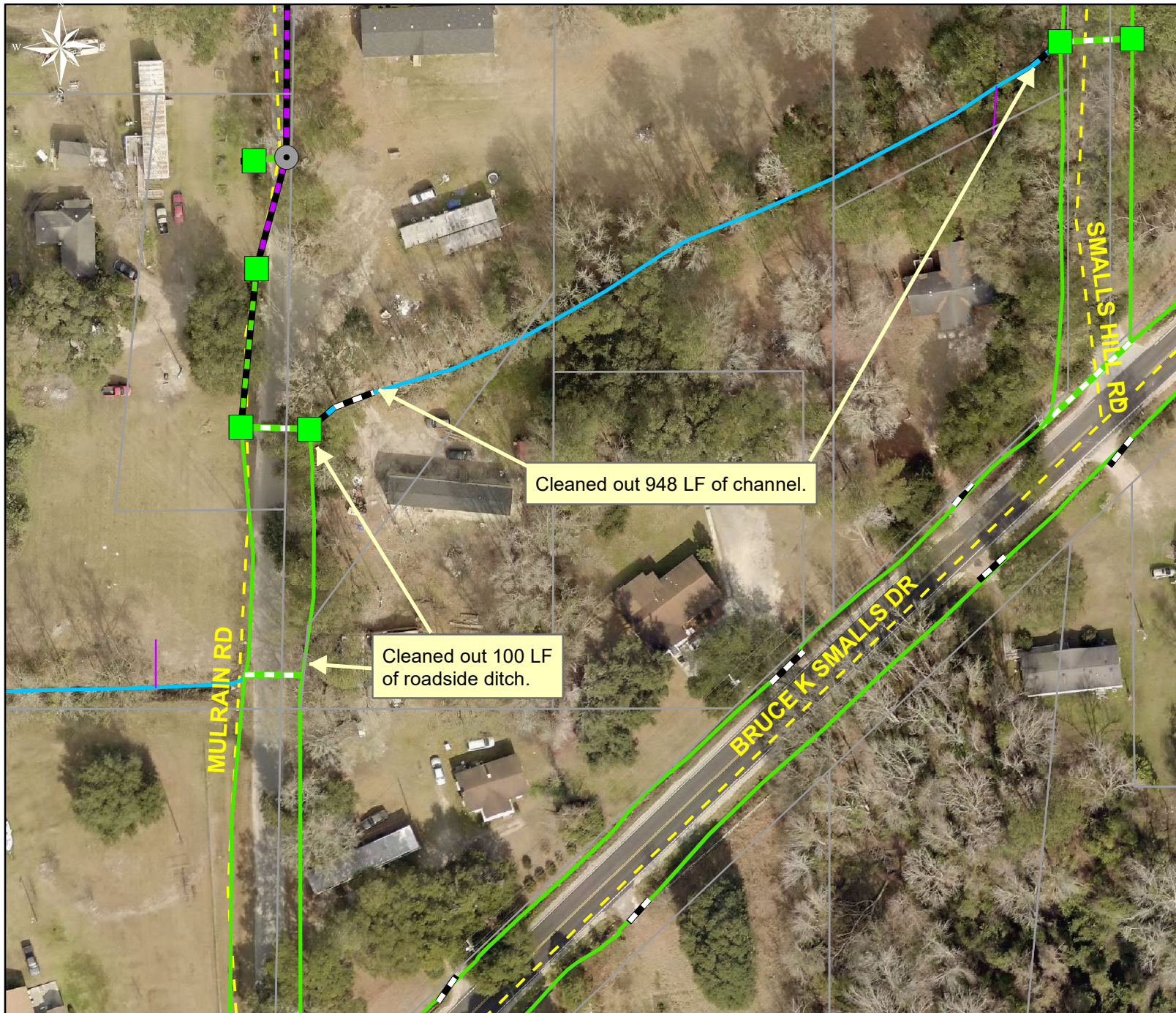
1 inch = 83 feet

Prepared By: BC Stormwater Management Utility

Date Print: 04/30/19

File: C:\project summaries map\Smith Road Map #2\_2019-555





Project: Smith  
Road Map #3

Activity: Routine/  
Preventive  
Maintenance

Project #:  
2019-555

Township/SW Dist:  
Port Royal Island/6

Completed:  
March 2019

### Legend

#### Drainage Type

- Access Pipe
- Bleeder Pipe
- Channel Pipe
- Channel
- Stream
- Crossline Pipe
- Driveway Pipe
- Lateral
- Lateral Pipe
- River
- Road Pipe
- Roadside
- Roadside Pipe

0 20 40 80 120 160  
Feet

1 inch = 83 feet

Prepared By: BC Stormwater Management Utility

Date Print: 04/30/19

File: C:\project summaries map\Smith Road Map #3\_2019-555





Project: Smith  
Road Map #4

Activity: Routine/  
Preventive  
Maintenance

Project #:  
2019-555

Township/SW Dist:  
Port Royal Island/6

Completed:  
March 2019

### Legend

#### Drainage Type

- Access Pipe
- Bleeder Pipe
- Channel Pipe
- Channel
- Stream
- Crossline Pipe
- Driveway Pipe
- Lateral
- Lateral Pipe
- River
- Road Pipe
- Roadside
- Roadside Pipe

0 15 30 60 90 120  
Feet

1 inch = 67 feet

Prepared By: BC Stormwater Management Utility

Date Print: 04/30/19

File: C:\project summaries map\Smith Road Map #4\_2019-555





Project: Smith  
Road Map #5

Activity: Routine/  
Preventive  
Maintenance

Project #:  
2019-555

Township/SW Dist:  
Port Royal Island/6

Completed:  
March 2019

### Legend

#### Drainage Type

- Access Pipe
- Bleeder Pipe
- Channel Pipe
- Channel
- Stream
- Crossline Pipe
- Driveway Pipe
- Lateral
- Lateral Pipe
- River
- Road Pipe
- Roadside
- Roadside Pipe

0 20 40 80 120 160  
Feet

1 inch = 83 feet

Prepared By: BC Stormwater Management Utility

Date Print: 04/30/19

File: C:\project summaries map\Smith Road Map #5\_2019-555